



TELEGRAPHENAMT

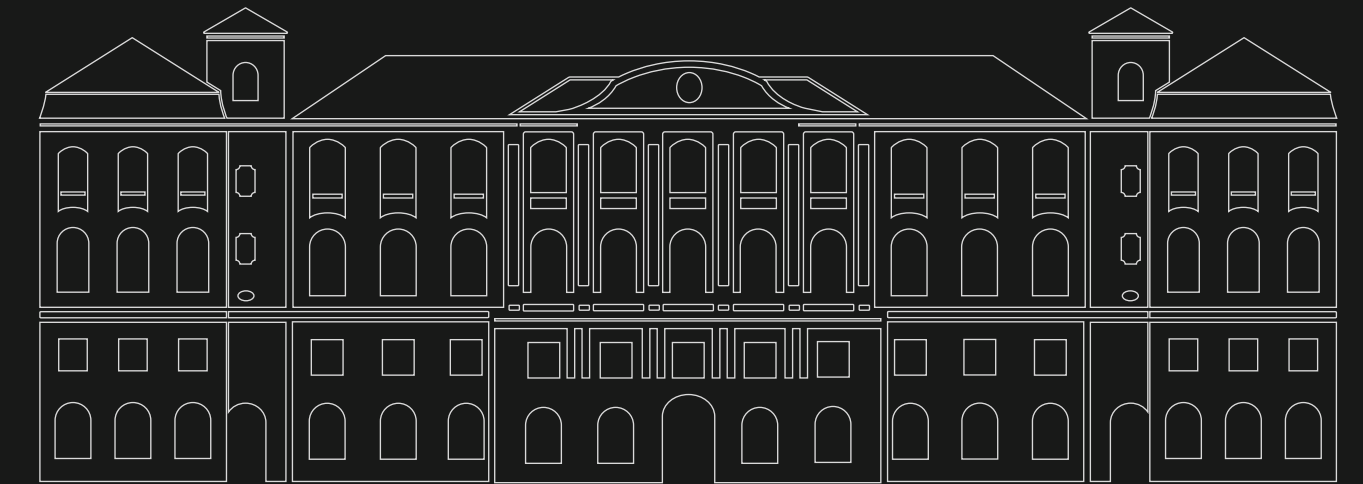
# TELEGRAPHENAMT EVENT SPACE

# OVERVIEW

- 01 // The Hotel
- 02 // Kutscherhof
- 03 // Kutscherhof 2
- 04 // Rohrpostbar



# THE HOTEL



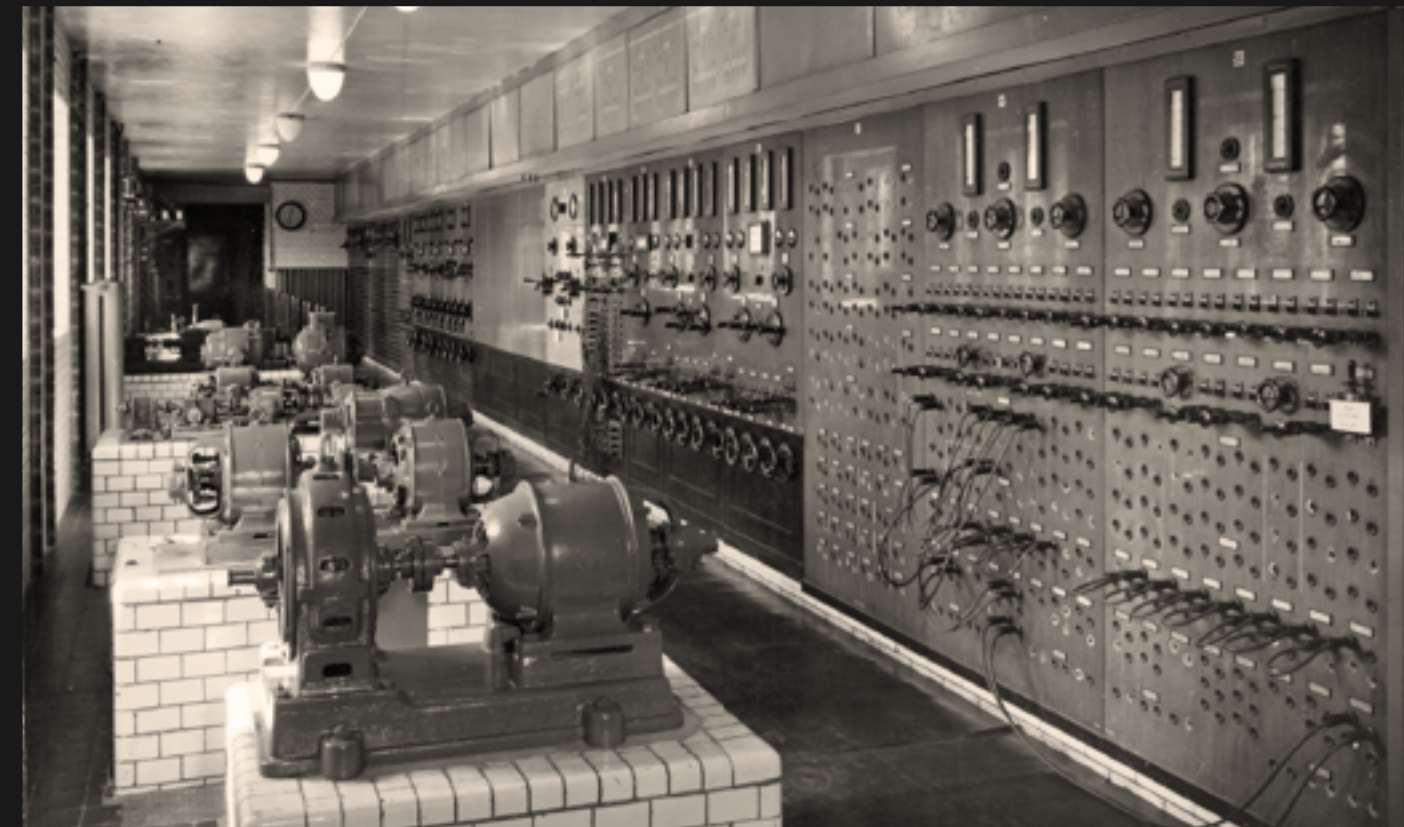
The neo-baroque main Telegraphenamt from 1916 has been dusted off in the last 10 years and given a new lease of life.

The result is a boutique hotel with 97 rooms, a restaurant, bar and event space.



Where people from all over the world meet today was Berlin's communications hub in the last century: construction of the main Telegraphenamt, one of the most modern of its time, began in 1910. One of the largest pneumatic tube systems in Europe was located in the basement of the building.

Telegrams were sent to the various post offices in Berlin via a 400 km long underground pneumatic tube network. It was not until 1977 that the GDR shut down the operation of the pneumatic tube system in the Telegraphenamt.



# THE FACTS



97 Hotel Rooms



Restaurant



Bar



Members Club



Japanese Bakery



Salad & Fitness Bar



1000 m<sup>2</sup> Event Space



Barber Shop



Fitness- & Treatment Area

# THE KUTSCHER- HOF

300 Seats

1.000 Standing Place

600 m<sup>2</sup> Area

As a multifunctional event space, the Kutscherhof and its neighbouring rooms offer space for dinners and conferences for up to 300 people or receptions for up to 1000 guests.

The fully glazed roof allows a clear view of the sky over Berlin, creating a unique lighting mood and atmosphere. Exposed steel beams and brick walls as well as fine oak parquet flooring complete the design to create the perfect setting for events of all kinds.



Kutscherhof with seating example



ROOT Bar

Restaurant ROOT

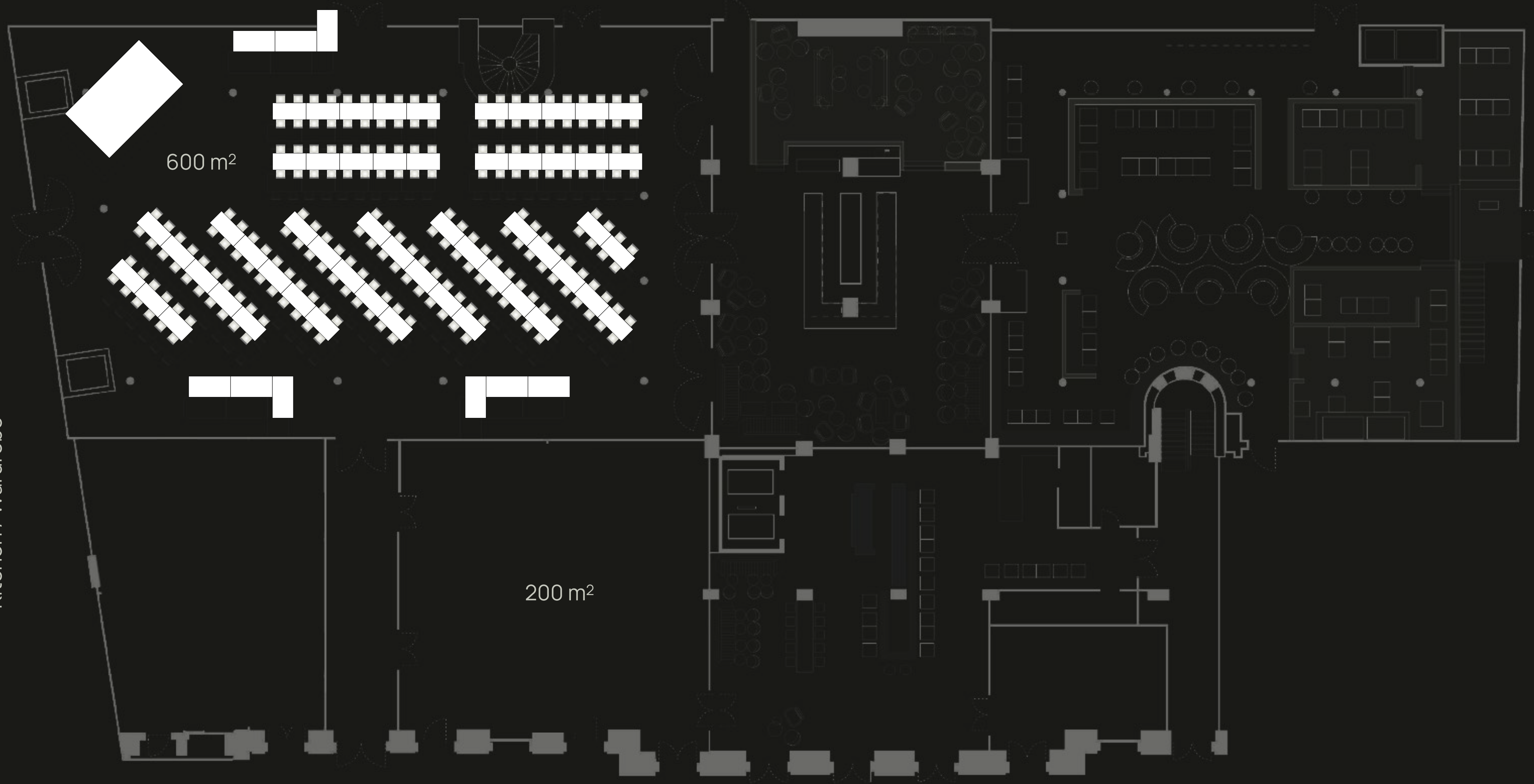
600 m<sup>2</sup>

200 m<sup>2</sup>

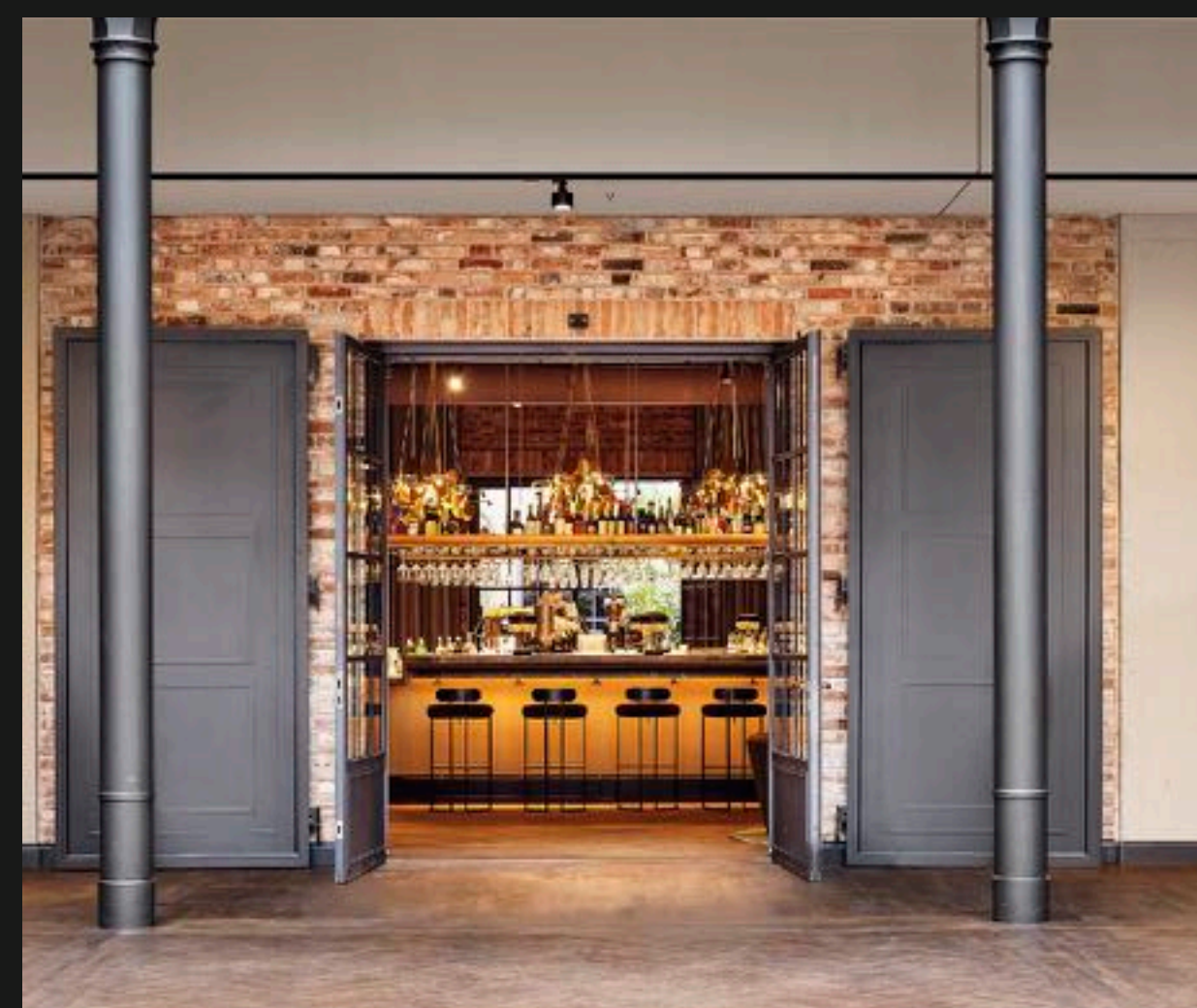
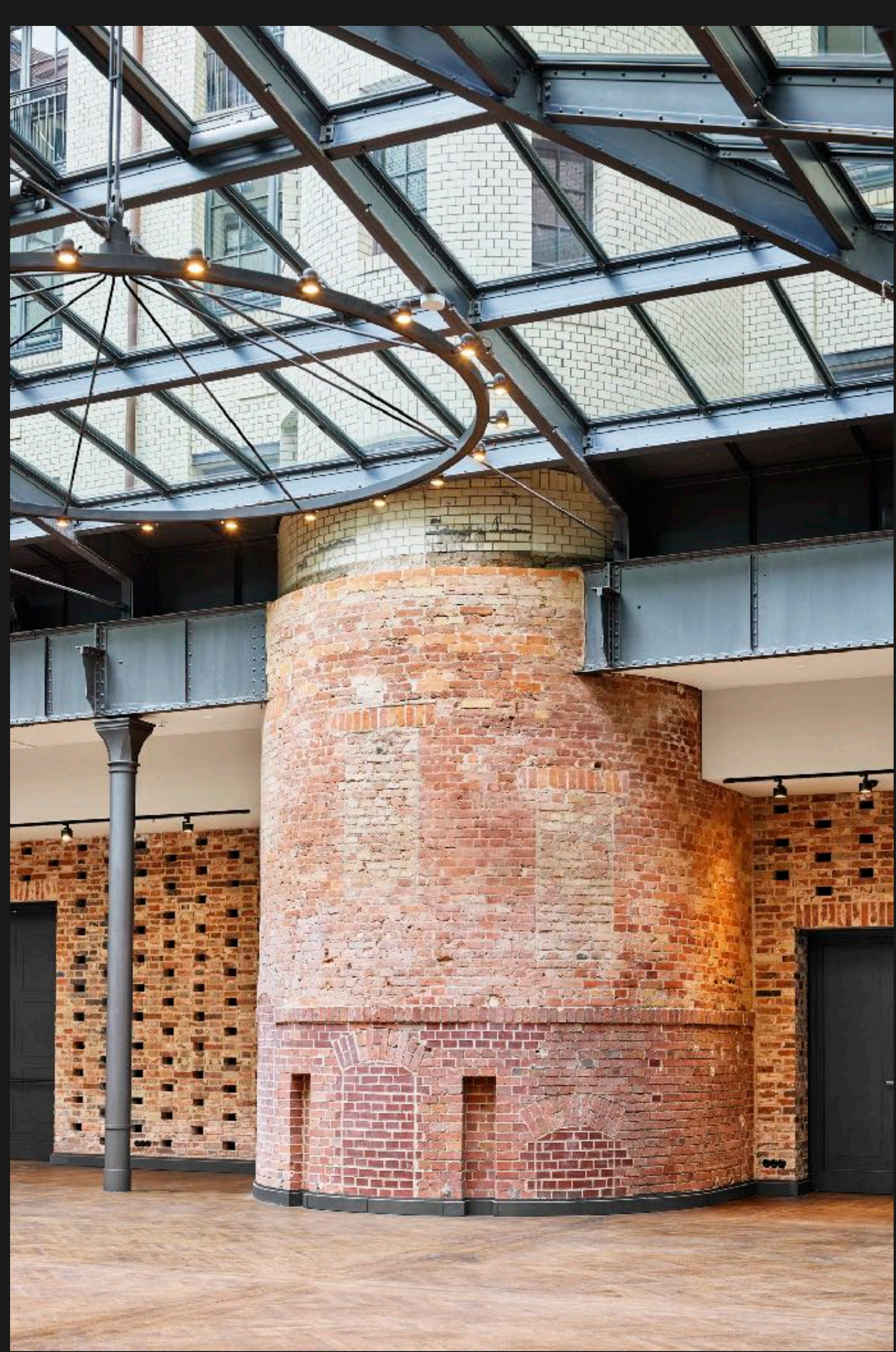
Kitchen / Wardrobe

Kutscherhof 2

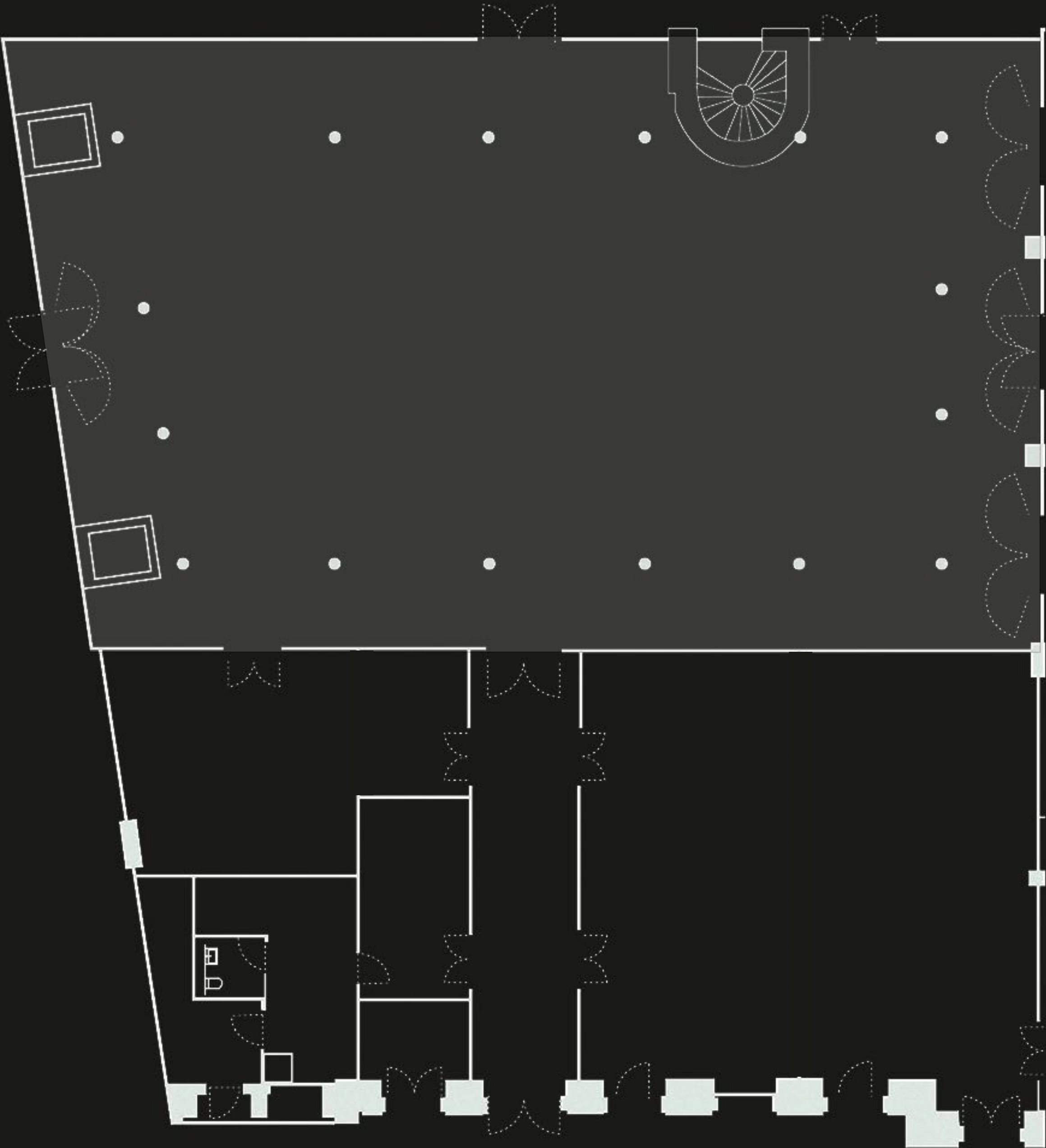
Entry / Lobby







# THE FLOOR PLAN



# THE KUTSCHER- HOF 2

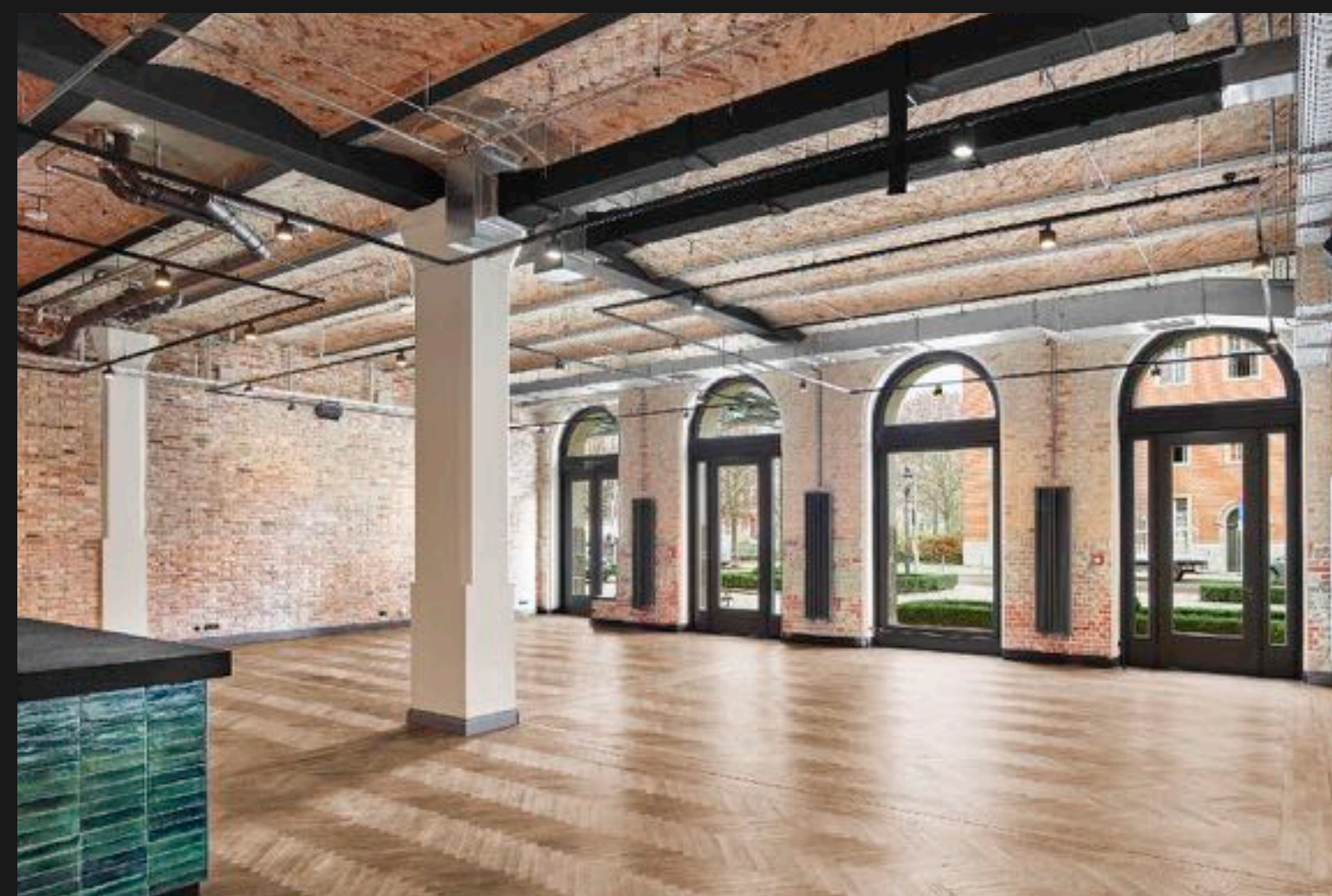
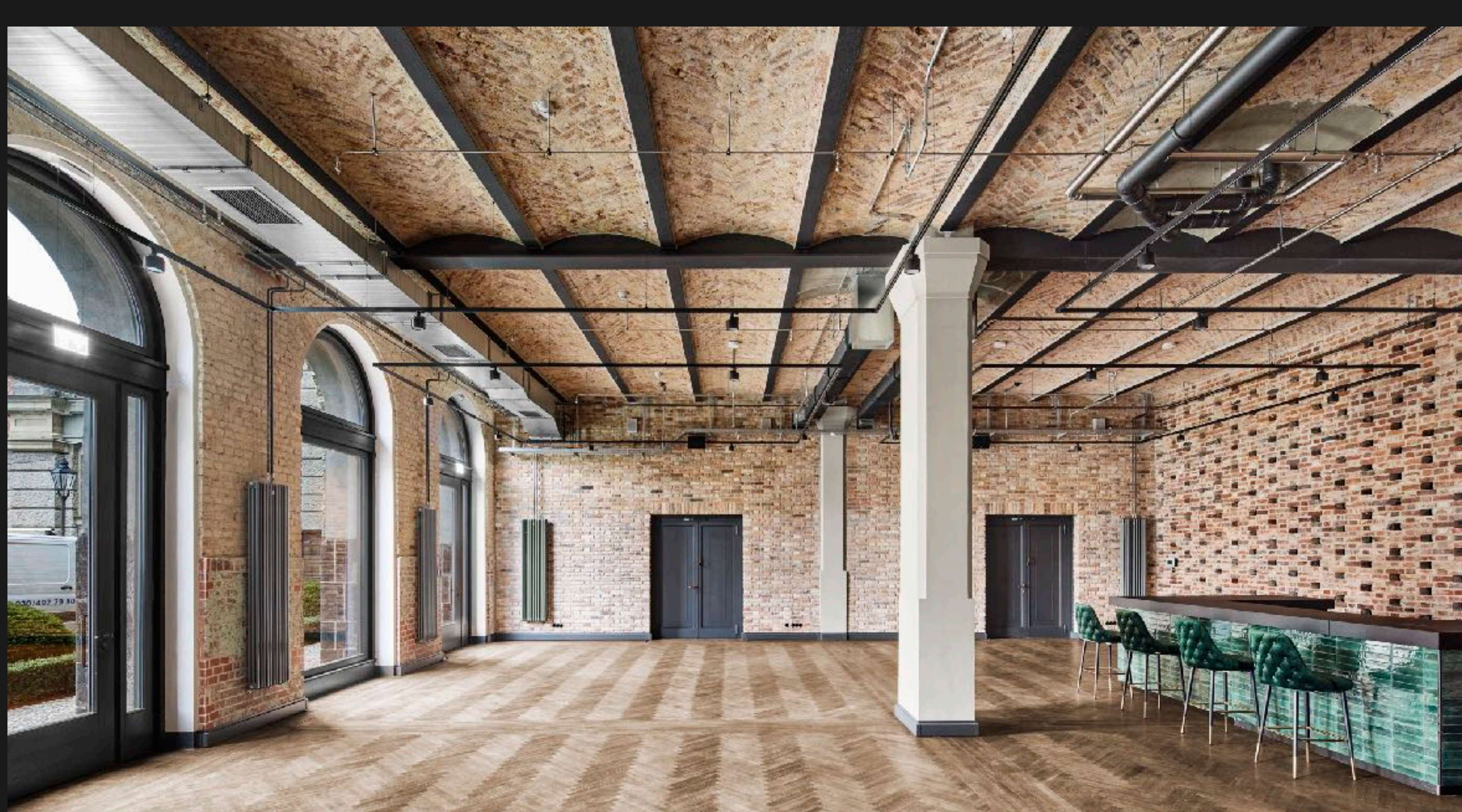
120 Seats

250 Standing Place

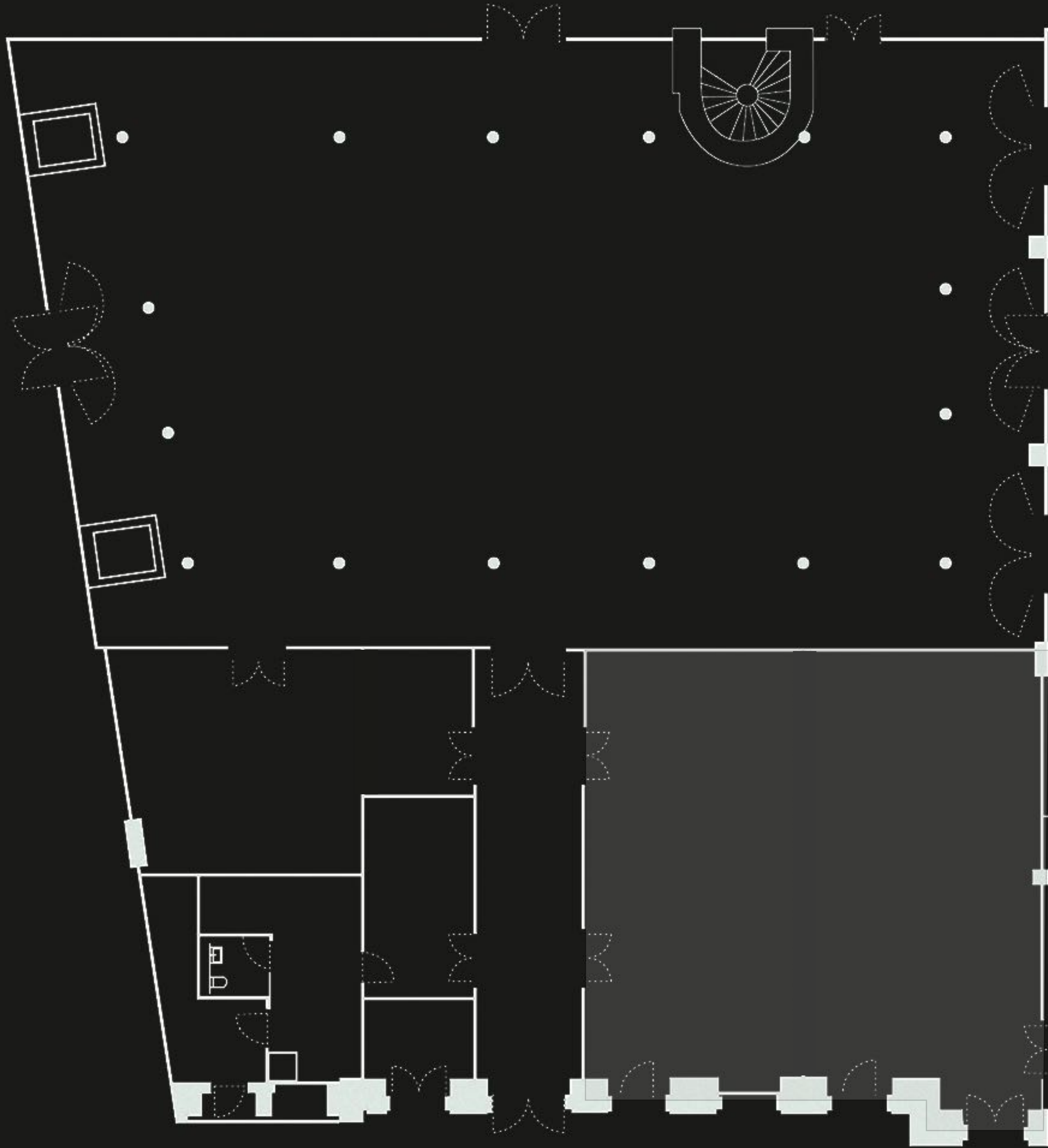
200 m<sup>2</sup> Area

With its large, floor-to-ceiling windows, listed brick walls and capped ceilings, Kutscherhof 2 offers the ideal setting for receptions and events for up to 250 people.





# THE FLOOR PLAN



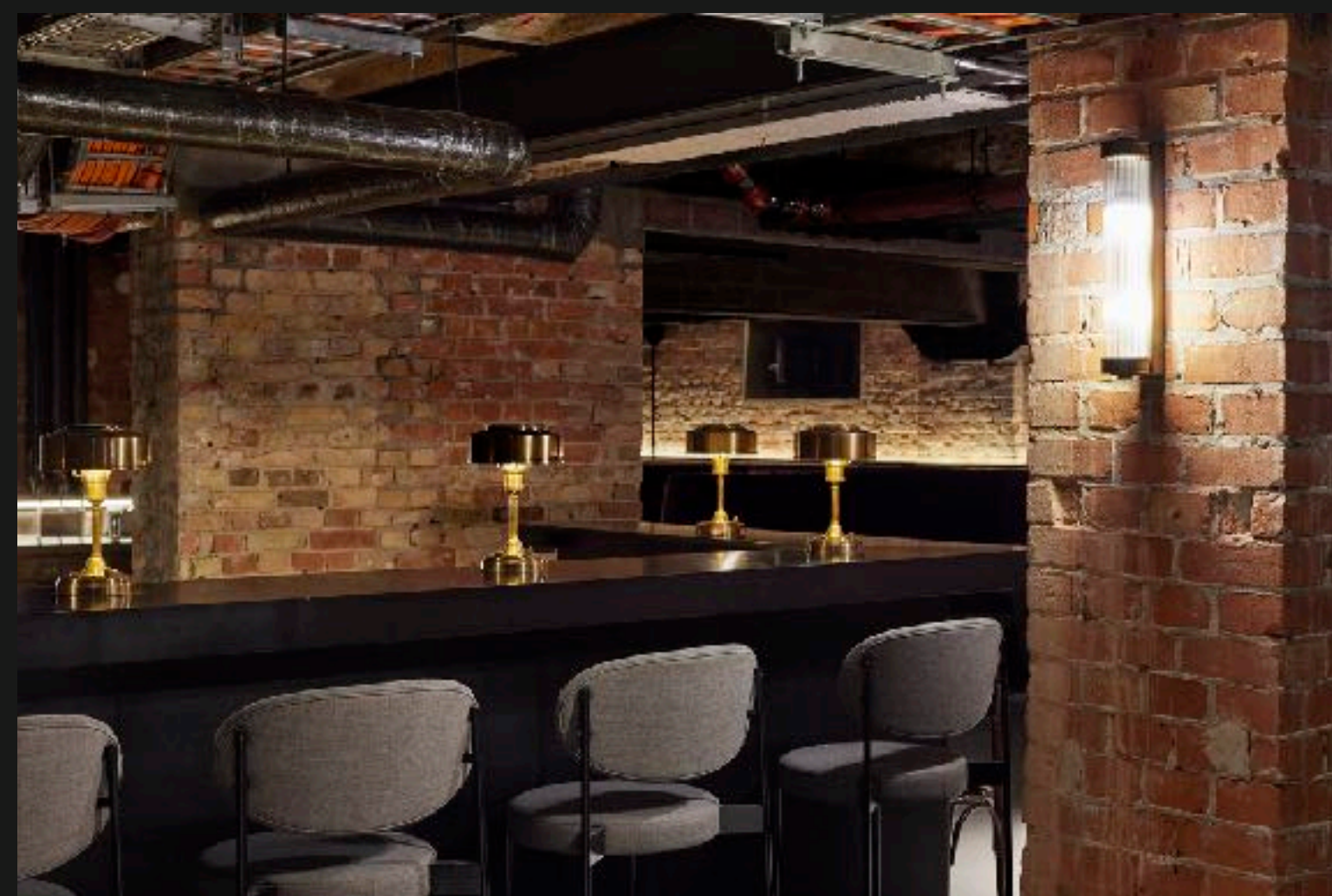
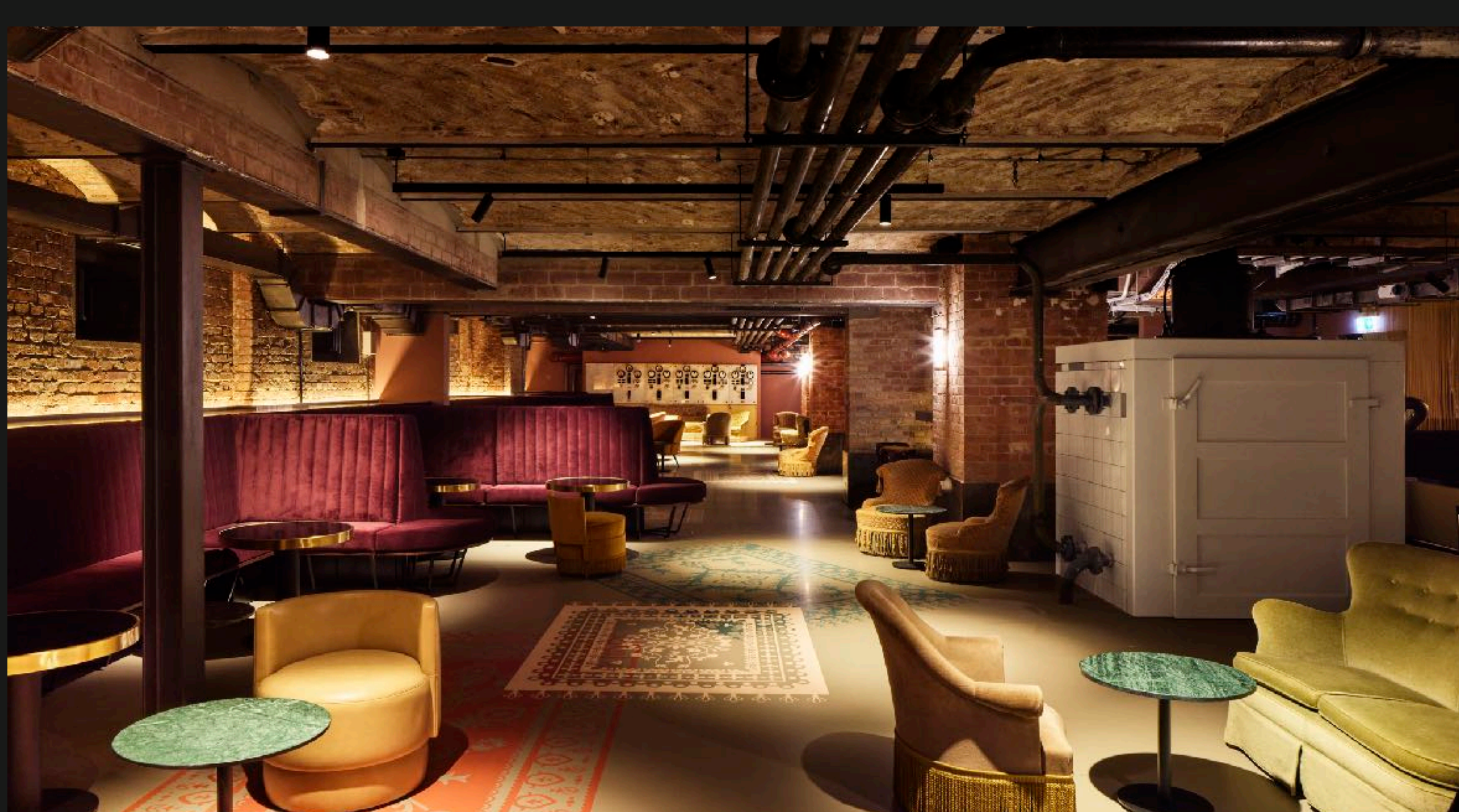
# THE ROHRPOST- BAR

Capacity 200

200 m<sup>2</sup> Area

Well hidden in the basement of the Telegraphenamts, behind heavy steel doors, is the pneumatic tube bar. Exhibits from the old pneumatic tube system are silent witnesses to past days and future stories.





# CONTACT

Website

[www.telegraphenamt.com](http://www.telegraphenamt.com)

Email

[event@telegraphenamt.com](mailto:event@telegraphenamt.com)

Instagram

[telegraphenamt.berlin](https://www.instagram.com/telegraphenamt.berlin)

LinkedIn

[Telegraphenamt](https://www.linkedin.com/company/Telegraphenamt)

Adress

Telegraphenamt // Monbijoustraße 11 // 10117 Berlin